



February 2009 VOL. 9 ISSUE 2

Master Gardener

PINELLAS COUNTY

Inside this Issue:

Page

- 2** Plant of the Month
- 3** Notes from Your MG Library
- 4** Important Announcements
- 6** Volunteer Opportunities & Events
- 8** Pam's Thoughts Safety Net
- 9** Calendar

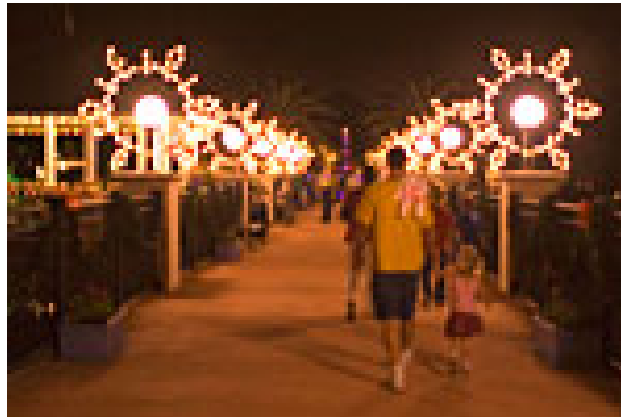
Lights Extravaganza Opens for Super Bowl Week

By CHUCK SCAFFIDI, MG

As we go to press with the MG newsletter, the Garden Light celebration sadly comes to a close Sunday evening February 1st. Although not as successful as the attendance during the holiday season, reopening the lights to the public during this week gave many an opportunity to visit again, bring their friends and visitors, and excite the new snow bird arrivals. Thanks to those that supported this week and enjoyed the many outstanding compliments from the visitors.

Following is the press release for this event and it is published here to remind you of the light celebration which will begin again later this year around Thanksgiving time:

"The Florida Botanical Gardens is switching on more than **425,000 colorful lights** to welcome Super Bowl visitors with a free Garden Light-Up Extravaganza. The Gardens are twinkling in a blanket of glittering lights that showcases the beauty of the destination's plants and landscapes from **6 to 10 PM every night through game day, Sunday, February 1.** New, energy



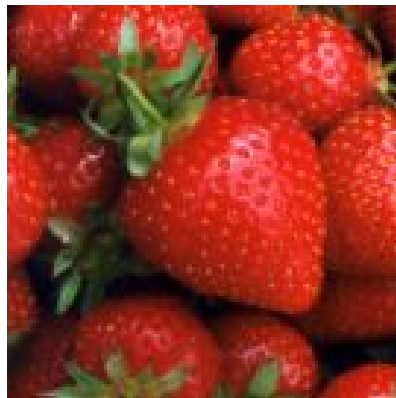
efficient displays replaced older models making the Extravaganza a leading example of an environmentally friendly event in the Tampa Bay area. This community event is funded by the Florida Botanical Gardens Foundation." ■

Mouth Watering Strawberry Know How

Saturday February 7, 2009

10:00am - 11:00am

Location: 12520 Ulmerton Rd., Largo



Start healthier eating habits with a Get Cooking Demonstration by the pros at Pinellas County Extension. This demonstration uses local produce to show how easy eating healthy can be with a little imagination. You will learn how to best purchase, store and prepare strawberries. Recipes will be shared, and fact sheets offered. ■

Register Now:

<http://pinellas.obsres.com/botanical/Info.aspx?EventID=%203002>

We are especially appreciative of staff, MGs, and others who contribute articles, events, and other items of interest to *The Green Leaf* each month. Please submit your input by the 20th of each month. This will help us assemble and publish the newsletter in a timely manner. Also, to save mailing costs, please limit your articles to 700-800 words or less. Limited newsletter space does not allow for full photograph viewing. If you would like a copy of any photograph presented in the newsletters, please contact me @ 727-582-2117.

Chuck Scaffidi
MG Editor

The Green Leaf is published by Pinellas County Extension for the County Master Gardeners and depends on submission of articles from Master Gardeners, Extension Staff and other authors.

MANAGING EDITOR:
Pam Brown, Urban Horticulture
Extension Agent

PRODUCTION EDITOR:
Chuck Scaffidi, MG

ASSISTANT EDITOR:
Carrie Shelby, MG

Please send articles to
cascaffidi@juno.com or
pwbrown@co.pinellas.fl.us

The Green Leaf is available on
line by clicking on newsletter

at: http://pinellas.ifas.ufl.edu/master_gardener/index.shtml

Plant of the Month

By JAMES STEVENSON, Public Education Specialist, FBG

Sacred Bo Tree, *Ficus religiosa*

In the northwest corner of the Botanical Gardens grows another of our "Champion Trees," this one a gift from the Marie Selby Botanical Gardens in Sarasota. The Sacred Fig or Bo Tree, *Ficus religiosa* is one on hundreds of species of fig (*Ficus*) which are distributed throughout the tropics.

In Central Florida, the Genus is represented by the sisterly-named "Strangler Fig," whose seeds germinate in the boughs of trees, and often the "boots" of Cabbage Palm. Once the seeds have been "planted" in the upper branches and boots by visiting birds, the young plant begins to grow, using the trunk of the "nurse tree" for support and access to sunlight. Eventually the aerial roots, which clasp and sometimes girdle the nurse tree, become the trunk of the strangler fig, often to the detriment or death of the nurse tree.

The Bo Tree, however, plays a bit more nicely with its neighbors. Native to Southeast Asia from India to Vietnam and China, this fig is sacred to Hindu and Buddhist religions as the species that bore witness to their deities' ascent to immortality. To this day, believers will sit beneath the Bo Tree to meditate.

The leaves of the Bo Tree are typical of many tropical species that live in wet/dry season habitats. The thick, shiny leaves are covered in a layer of wax that helps shed rain from the surface—thus improving photosynthesis. Another wet-season adaptation common in rain forest plants is a prominent "drip-tip" at the apex of the leaf blade. This narrowing of the lamina at the end allows water to form droplets that can help pull water off the leaf. The Bo Tree is dry-season deciduous and we find the attractive, heart-shaped leaves throughout the gardens in late summer. Some leaves, in fact, fall into various water features in the gardens where the leaves are "skeletonized" or stripped-down to the veins. This lovely natural filigree can be found for sale in various decorative pieces.

As with many tropical species, the Bo Tree is extremely fast-growing. Our specimen was planted as a clone of a magnificent tree growing at Selby Gardens. Eventually reaching 30-50 feet in diameter, we will need to allow plenty of space in coming years to accommodate the eventual banyans that will form.

Is this a sustainable landscape choice? The Bo Tree is not particularly drought tolerant in the summer months, but is used to a dry season, so can make adjustments (i.e.: dropping leaves.) This is not an invasive plant, as with many figs the flowers are pollinated by minute wasps—the species of which does not occur in Florida, therefore no seedlings to contend with (creeping fig, on the other hand, invades natural areas by RUNNING into them—a different mechanism for invasiveness.) Overall, a lovely, if massive tree with cultural and aesthetic qualities. ■



NOTES FROM YOUR MG LIBRARY

Books on the Shelves

By ANGELA STRAIN, MG

While browsing through the stacks, I noticed a Sunset Book titled Landscaping With Ornamental Grasses. This soft cover book is only 128 pages including the index but chocked full of information and ideas for your garden.

There are recommendations for waterfront gardens, hot and dry areas, shade areas, and anything in between.

Throughout the book you can find colorful combinations for every situation.

I like how the editors refer to "Grooming" ornamental grasses as if they are pets. To most of us, the chore of cutting back the clumps can be challenging and sometimes painful. But unless you have grazing animals or seasonal fires, this annual task is beneficial. You will have better looking and healthier grasses if you groom.

If you decide to spend some quality time with this book, I need to let you know it is located in the RED DOT section and please be sure to return it to its slot when finished.

On a personal note I want to acknowledge **Pam Brown** who guided us through every step many years ago when setting up our little nook. Without Pam's help, the MG Library would not exist. Thank you, Pam for all you have done for us.

The Florida Botanical Gardens Foundation Needs "You" to Help "Our" Gardens Grow

The Florida Botanical Gardens Foundation FBGF, is a 501 (c) (3) corporation. It was established in 2003 to secure funding for future expansion of the Gardens that opened in 2000. As you know, Pinellas County maintains the facility. The FBGF provides project support for the Gardens through memberships, a botanically orientated [gift shop](#), donations, memorials, and proceeds from special events. The FBGF actively promotes awareness of the Gardens to the Tampa Bay area residents and visitors. The FBGF values its' ongoing partnership with the Master Gardeners on mutually beneficial FBG projects. Please consider giving some of your time, or talents, or treasure to the Foundation. Let's work together to help the gardens grow.



- Join other MGs on the FBGF board that meets the second Monday at Extension from 9-10:30 AM. Visitors always welcome. The next meeting is Wednesday February 11.
- Join other MGs on an FBGF committee: Projects like the Children's Trail, Inspiration Nook, and Holiday Garden Lights, Events, Membership, Development, and/or Grounds.
- Join other MGs as members of the FBGF or re-new your annual FBGF Membership at any level from Student (\$10) to Garden Steward (\$500) and enjoy the benefits of membership including free admissions to over 237 Gardens in the USA and Canada. (New Master Gardeners received a free membership to the Foundation). *Please see details for a membership recruiter position on page 6, under "Volunteer Opportunities".*
- Shop in the Botanical Bounty gift shop (members get a 10% discount) for yourself or for a unique gift for family or friends. *Please see page 4 for this month's promotions.*
- Give a gift of FBGF membership (individual for \$30 and family at \$50) for a special event or just to say 'thinking of you'...who needs more *stuff*?
- Donate as little as \$10 to the FBGF Tree Bank* to help us plant more unusual specimens and replace those plants lost by aging and weather extremes.
- Honor a special person or remember a lost loved one with the purchase of an engraved paver* for \$100 for placement in the shade garden.
- Memorialize a unique someone with a bronze leaf on the "Botanic Omega" sculpted tree* hanging in the extension lobby for a \$1000 or more donation.
- Drop loose change or a few bucks in the DONATION box in the extension lobby on every garden visit as admission is free.

* You will find membership forms, envelopes for Lights donations and donation forms for the Tree Bank, Pavers, and Bronze leaves in the wooden stand outside the gift shop. ■

IMPORTANT ANNOUNCEMENTS

- **MG Update Meetings**
- **Time to Make Your Bed**
- **Strawberry Field Day**
- **2009 Costa Rica MG Trip**
- **2009 MG State Conference**
- **Volunteer Hours Sign in**
- **Herb Fest**
- **2009 MG Conference in Las Vegas**
- **Update on the Children's Trail**

RECORDING YOUR VOLUNTEER HOURS

Please Remember to Sign Out!

The computer program for logging volunteer hours is in the volunteer office.

- You must **sign in and sign out** when you are at Extension.
- You can still log your time in the book or use e-mail, but it is preferred that you use the computer sign-in sign-out method.
- With over 200 volunteers at Extension it becomes a considerable burden on the volunteer coordinators to manually enter your hours.

If you have been sending your hours by e-mail, use the form in the log book as a guide and send to: MGEDU@co.pinellas.fl.us. Please direct your questions to coordinator Chuck Scaffidi or an assistant, Susan Baughman or Mary Crowe.

■ **Master Gardener Update Schedule - Mark your Calendar!**

February 9, 10AM Orchid Care and Propagation - Michael Polen from Art Stone Orchids. He will have orchids for sale too!

March 9 - Landscape Design Basics Gail- Marie H. DeChapman Extension Specialist in UF Center for Landscape Conservation and Ecology

April 8- Questions from the Desk – a hands on review of Plant ID, diseases and pests -Andy Wilson, Horticulturalist

May 8- Insects -Cindy Peacock, Horticulturalist

■ **Time to Make Your Bed!**

An assortment of books on vegetable gardening is now available at the **Botanical Bounty Gift Shop**. While you're checking out all the new books you might as well pick up some new gardening gloves, or a fanciful tee shirt . Don't forget - you can purchase very special Valentine's gift for all those lovely gardeners in your life! If you are a FBG member or an MG you receive a 10% discount on your purchase. **From February 8-14 Stacey will take off an additional 10%.**



Stacey Zidi in the Botanical Bounty gift shop

■ **Strawberry Field Day—Friday, February 13**

Plan to attend the Strawberry Field Day at the Univ. of Florida/IFAS Gulf Coast Research and Education Center in Balm. Friday, February 13th is the day participants will learn about the newest UF varieties, disease and pest protection, fumigant issues and irrigation practices. The keynote speaker is a former UF/GCREC faculty member, Dr. Dan Legard. Now with the California Strawberry Commission, Dr. Legard will be speaking to the group regarding California's strawberry fruit production and practices. Registration is FREE and includes lunch. Call 813-634-0000 X3101 or email ccooley@ufl.edu to pre-register. A map and directions can be found on our website <http://gcrec.ifas.ufl.edu>. Visit our strawberry website as well at <http://strawberry.ifas.ufl.edu> to get the latest research information and a link to our newsletter – Berry/Vegetable Times.

■ **Master Gardener Costa Rica Trip 2009**

Costa Rica has some of the most diverse wildlife and natural landscapes in the world, ranging from tidal mangrove swamps to sandy beaches, and from tropical rainforests to subalpine mountains. Florida Master Gardeners traveled to Costa Rica in 2004; they had such a wonderful experience, they decided to go back.

Date: April 22 through May 3 (12 days/11 nights) Itinerary:

http://gardeningsolutions.ifas.ufl.edu/mastergardener/tours/costa09_2.shtml

■ **State Master Gardener Conference for 2009**

The 2009 conference is November 2 –4 at the Hilton in Ocala. This will be the 30th anniversary of the Master Gardener Program. More details and a conference website will be available soon.

■ HerbFest Spices Up Pinellas County Market in the Park

Come join in the fun at *HerbFest* at *Pinellas County Market in the Park*, **Saturday, Feb. 14, from 9AM to 1PM**. As part of the activities, find herb growers, fresh and dried herbs and herbal teas and drinks at the Market. Along with the Market fun, four programs planned. To register for programs, log onto www.pinellascountyextension.org and click on the "Online Class Registration" button or call (727) 582-2100.

At 10AM., Family Fun Learning – The Wonderful World of Herbs will get guests up close and personal with more than 100 different plants during a tour of the herb garden. Guests make a mug cozy to add to the fun. The program cost is \$2 per person.

At 10AM, a Growing Herbs in the Suncoast program is scheduled with experts from Pinellas County Extension. Guests will learn how to select the right herb to grow and tips for care in the Suncoast area at this free program.

At 11AM, a Tea Thyme program is brewing. Instead of dunking a tea bag to enjoy a nice cup of tea, why not discover the pleasure of fresh herbs for a special beverage? At this free program, guests learn how to make tea and other beverages from herbs.

At NOON, a Cooking with Herbs demonstration is on tap. See how herbs can brighten every meal with a little imagination. Recipes will be shared, and fact sheets offered.

■ International Master Gardener Conference

"New Frontiers" in Horticulture and Gardening -March 22-26, 2009

Spring in the desert is an incredible time. Native plants, flowering in yellow, orange and red, really put on a show. Tours to the Master Gardener Orchard and to the exciting, new Springs Preserve where you can see sustainable, low water concepts at work. The **University of Nevada Master Gardener Orchard** is an outdoor living laboratory testing different types and varieties of fruit and vegetables. It demonstrates how to grow the best fruit possible, with minimal agricultural chemicals, under our harsh desert climate. The orchard today has over 500 trees, wine and table grapes, and vegetable test plots on a little over an acre.



Registration Deadlines:

- Regular Registration, \$310 — ends February 15, 2009
- Late Registration, \$350 — if available

You can register online. Please visit the website for more information : www.unce.unr.edu/imgc.

■ Update from Children's Trail Committee



Plans for garden visits are in progress . Children's Trail Chair, Pat Dieterich, is planning visits for the committee members to other gardens in the region that offer children's activities. The current plan is to look for other areas in the FBG where we can expand the Children's Trail.

Committee Members: Dianne Wheatley-Giolotti, Mary Campbell, Vivian Haicken, Alyssia Chivers, Betty Lipe, Cindy Peacock, Chuck Scaffidi, Pat Dieterich, Bob Albanese, Andy Bergeron and Bobbie Jones.

■ Mark Your Calendars!

Volunteer Appreciation Luncheon

Wednesday, February 18, 11:30AM

RSVP 582-2673 by Friday, February 13

This will be a pot-luck, please bring a dish to share

Pam's Retirement Party

Wednesday, March 18, 3 - 6PM

Open House in the Magnolia Room

Details to follow soon.

VOLUNTEER OPPORTUNITIES & EVENTS

For February & March

- **FBG Membership**
- **Pam's Request for Help**
- **HerbFest**
- **Compost & Vegetable Beds**
- **EPCOT Flower Show**
- **Tropical Fruit Expertise**

Looking for Tropical Fruit Garden Expertise

MG help needed for local elementary school.

Joanie Falk, Science Teacher from Saint Paul's School in Clearwater is looking for advice about growing a tropical fruit garden at her school. If you have some experience growing tropical fruit and are willing to meet with her and the students at the school and provide some tips, please call her at 727-641-3853.

Please let Cindy or Pam know that you are going to help.

■ **FBG Membership Recruitment Position**

The FBG Foundation is looking for someone to be responsible for soliciting new members. Mary Ellen Warner is responsible for this project and has worked tirelessly in this capacity for many years doing a remarkable job recruiting new members. She has agreed to continue this effort on a limited basis and has agreed to assist and mentor the person filling the this position. Please consider volunteering for this effort since it is critical to the Foundation's existence and is a rewarding experience.

Call Chuck Scaffidi at 727-582-2117 or e-mail cascaffidi@juno.com, or Vivian Haicken, FBGF Chair at 727-452-9362 or e-mail vhaicken@tampabay.rr.com

■ **Pam's Request for Help**

During the transition and after I retire we want to keep each of you engaged in volunteering with us. You are so valuable to us and to our mission. Jean Field will serving as the liaison to the Master Gardener program. Since she will also still have her many current duties as well, I would like to request volunteers to serve on two different committees to help:

- **Program Committee** – to help find speakers who are willing to provide stimulating educational programs for the monthly Master Gardener Updates. This would also include deciding about which programs should also include a Pot-Luck lunch.
- **Field Trip Committee** – to help determine and organize field trips that are local enough that everyone can carpool to the locations. Also included would be making the arrangements with the field trip location and getting information to Chuck for inclusion in the newsletter and to Carol to send out to MGs.

I believe that three or four members for each committee should be sufficient – unless as you meet you feel the need for additional members. Your willingness to serve on either of these committees is greatly appreciated. You are all the best!

■ **Help at HerbFest- Market in the Park -Saturday February 14, 9AM to 1PM**

MGs will host an information booth and sell herbs too. If you would like to help with this event call Cindy Peacock at 727-582-2671

Volunteers needed for:

- Room Monitor
- Room Host or lobby director
- Help MG's at herb booth
- Children's program – help the children make mug cozies
- Herb volunteer in the herb garden (answer questions)

■ **Help Needed in Composting and Raised Vegetable Bed Areas!**

Volunteers are needed to work in the composting and raised vegetable bed demo areas on Tuesday and Friday mornings.

Contact **John Kingsbury 727-569-6409, Pam 727-582-2112** or

Carol 727-582-2124 to let them know if you are interested in this volunteer activity. You might get to take home some wonderful compost!

■ **MG Help Desk at the EPCOT International Flower and Garden Show**

Four MGs go with a Horticulturist to EPCOT for the day to man the MG Help Desk. This has always been a fun day for those who go and ample time is allotted for each to wander through the festival on a rotating basis. The sign-up sheets will be on the bulletin boards located in the back hall at the Extension office. We will draw four names and an alternate from those who sign up for each day. The dates are **March 25** (Cindy Peacock leads), **April 1 and May 6** (Jean Field leads). Transportation provided by Extension van.

Master Gardener Volunteer Opportunities (Extension and FBG)

Day	Time	Activity	Point(s) of Contact
Monday	9A - Noon 1P - 4P	Front Desk	Andy Wilson 582-2135 Bob Albanese 582-2081 Linda Culhane
	8A - Noon 8A - Noon	Greenhouse - Plant propagation for FBG Andy's Pond - Landscape maintenance	Patsy Schamber Andy Wilson 582-2135 Bob Albanese 582-2081 Linda Culhane, Sue Bowman
	8A - Noon	Watering of planted pots for FBG	David DeLaMarter
	9A - Noon 1P - 4P	Front Desk	Andy Wilson 582-2135 Cindy Peacock 582-2671
Tuesday	8A - Noon	Herbs - Maintenance of Herb Garden	Allen Cordell, Ruth Davies
	8A - Noon	Composting and Vegetable Garden	John Kingsbury 812-2008
	8A - Noon	Tropical Fruit Garden maintenance	Jean Field 582-2504
	8A - Noon	Weeding over by the Gulf Coast Museum of Art	Bob Albanese 582-2081 Lillian Wollfinger, Dorothy Whitley
	3P - 5P	Ochs 4-H Vegetable Garden, Hamlin Road, Largo	Jean Rogalsky 582-2597
Wednesday	9A - Noon 1P - 4P	Front Desk	Andy Wilson 582-2135
	8:30A - Noon	Native Plant Garden maintenance	Jean Field 582-2504
Thursday	9A - Noon 1P - 4P	Front Desk	Andy Wilson 582-2135
	8A - Noon	FBG landscape maintenance	Bob Albanese 582-2081
	3P - 5P	Ochs 4-H Vegetable Garden, Hamlin Road, Largo	Jean Rogalsky 582-2597
Friday	9A - Noon 1P - 4P	Front Desk	Andy Wilson 582-2135 Bob Albanese 582-2081
	8A - Noon	Watering of potted plants at FBG	Barbara Orr James Stevenson 582-2562
	8A - Noon	Greenhouse propagation for FBG	John Kingsbury 812-2008
	8A - Noon	Composting and Vegetable Garden	Cindy Peacock 582-2671
	8A - Noon	Butterfly Garden maintenance	Bob Albanese 582-2081
	8A - Noon	Bromeliads	Dick & Terry Berube
Saturday	8A - Noon	Roses, Raised beds & annual plant maintenance	Marcel Pincince 549-8352 Pat Mann
Weekends	Saturday and/or Sunday	Various Events and Festivals or help with educational classes	Let Carol Suggs (582-2124) know of your willingness to help Carol Suggs 582-2124
Weekdays	Days vary with tasks available	Various clerical and computer tasks	Chuck Scaffidi 582-2117 cascaffidi@juno.com

SAFETY NET



Tetanus Vaccinations

Following the introduction and widespread use of tetanus toxoid vaccine in the United States, tetanus became uncommon. However, older adults have a disproportionate burden of illness from tetanus. During 1990--2001, a total of 534 cases of tetanus were reported; 301 cases occurred among adults aged 19--64 years and 201 among adults aged ≥ 65 years (CDC, unpublished data, 2005).

The tetanus causing bacteria *Clostridium tetani* lives in the soil and can enter the body through broken skin. Serious tetanus infections require low oxygen to become toxic. Contamination of deep puncture wounds with soil provides the conditions for this type of infection. Since many of us gardeners are out playing in the soil, it is important to maintain immunity to tetanus.

The Centers for Disease Control (CDC) and Prevention recommends that adults be vaccinated every 10 years. In addition, you should be re-vaccinated at the time of receiving a serious puncture wound if it has been more than five years since the your last tetanus vaccination.

Link to Pinellas County Health Department Immunizations :
<http://www.pinellashealth.com/ImmuShotsTravel.asp>

By **PAM BROWN**,
Urban Horticulture Extension Agent

Happy Valentine's Day!

As I prepare to retire and after I am gone, I have asked Jean Field to be the staff liaison with the Master Gardener program. Jean, as many of you know, has much experience and training in volunteer services. She will be helping to keep the program going and serving as a person where you can take your concerns and comments. I have every confidence that Jean will do a wonderful job.

There a number of volunteer opportunities coming up now that it is nearly spring. Be thinking about how you can help.

First – we have three dates for the EPCOT International Flower and Garden Show. This is where 4 Master Gardeners go with a Horticulturist to EPCOT for the day to man the Master Gardener Help Desk. This has always been a fun day for those who go and ample time is allotted for each to wander through the festival on a rotating basis. The sign-up sheets will be on the back wall. We will take all who sign up for each day and draw the four names from this group along with one alternate. The dates are March 25 (Cindy leads), April 1 and May 6 (Jean Field leads each of these). Cindy and Jean will drive an Extension Van so that all can ride together – this makes getting inside EPCOT much easier.

Second - we have events that require some volunteer support for us to be successful. February 14 will be our annual Herbfest from 9 a.m to 1 p.m. Contact Cindy Peacock (582-2671) to see what volunteers are needed. The weekend of April 25 & 26 is the Green Thumb Festival. We generally need 4-5 volunteers for each shift each day of this festival. Then the next weekend – May 2 & 3 is the Pinellas Living Green Expo. We would like 2 - 3 volunteers for each shift each day for this event. There will be sign-up sheets on the back bulletin board for both of these events.

There will always be some other classes that need volunteers to help with the set-up, registration and clean-up. We will let you know about these as we have them scheduled. You may also want to consider preparing for an educational presentation with the group at the Gibbs Library on the St. Petersburg College campus in St. Pete. Please contact Phyl Lawson at pilawson@tampabay.rr.com or call her at 363-0067 if you would like to participate. She is the Master Gardener who is organizing this activity.

Mark your calendars for the Annual Volunteer Appreciation Luncheon. It is February 18th starting at 11:30. This year we need for the luncheon to be a Pot-Luck. We have been notified not to spend any money – especially for food and drink. I am so thankful that I have already purchased the awards. You should have received your invitation. Please remember to RSVP by calling 582-2673 so that we can be properly prepared.

Also, remember HerbFest this month – on Valentines Day. Master Gardeners will be selling herb plants and there will be four herb classes as well. You can register for these classes at <http://pinellascountyextension.org> – click on the "Register for Classes" button, or you can call 582-2100. There is not a charge for classes, but we would like to know how many so that we can properly prepare.

I know that I say this every month, but we are so appreciative for all that you do for us. Your volunteer service allows us to shine!

Thank you,

♥ Pam



Mark Your Calendars for March 13, 2009 Celebrate the 4-H Centennial in Pinellas County

By JANET GOLDEN, Distance Education & 4-H Program Leader



2009 is here and with it comes the Florida 4-H Centennial Celebration! Did you know that nationally 4-H celebrated 100 years in 2002, but in Florida we reach 100 next year? Pinellas County 4-H would like to celebrate that milestone here locally. The Pinellas County 4-H Foundation is planning a fundraising dinner with a centennial theme on March 13 at 6:30PM at Banquet Masters in Pinellas Park. Tickets will be \$50.00 for adults and \$25.00 for youth. This will include a buffet meal, guest speaker, and plenty of entertainment. The proceeds will go to the Pinellas County 4-H Foundation to support the operating expenses of the 4-H programs and to pay for youth scholarships. More details along with invitations will be coming, but we wanted to make sure you saved the date now. ■

Volunteer Recognition Luncheon

Wednesday, February 18, 2009 11:30AM

You are cordially invited to attend the annual recognition luncheon in your honor. This year will be a pot-luck and we are requesting that you each bring a favorite dish to share with your fellow volunteers—a main dish, salad, vegetable, or dessert.

RSVP by Friday, February 13 - Phone 727-582-2673

I look forward to seeing each of you there.

♥ Pam

2009

February

THROUGH SUN, FEB 1

- Lights Extravaganza in the Garden

SATURDAYS IN FEBRUARY, 9AM-1PM

- Market in the Park at Extension

SAT, FEB 7, 10AM

- Strawberry Know How at Extension

MON, FEB 9, 10AM

- MG Update-Orchids and Propagation.

SAT, FEB 14, 9AM-1PM

- HerbFest at Market in the Park

WED, FEB 18, 11:30AM

- Volunteer Appreciation Pot-Luck Luncheon

Looking Ahead!

SATURDAYS IN MARCH, 9AM-1PM

- Market in the Park at Extension

MON, MARCH 9

- MG Update-Landscape Design Basics

WED, MARCH 18, 3-6PM

- Pam's Retirement Party

For details on some of the events listed go to the calendar on the Pinellas County Extension Lawn & Garden website.

<http://www.pinellascounty.org/scripts/publish/webevent.pl?cmd=openical&cal=cal6>



Pinellas County
12520 Ulmerton Rd.
Largo, FL 33774-3695
Phone: (727)582-2100
Fax: (727)582-2149

The enclosed material is provided as one of the many services relating to the educational programs offered by this agency. Our statewide network of faculty is prepared to provide current information on food, agriculture, marine and natural resource science, energy, nutrition, family and 4-H youth, and related fields. We will be happy to help you with additional information upon request.

Pamela W. Brown

Pamela W. Brown
Extension Agent II, Environmental Horticulture

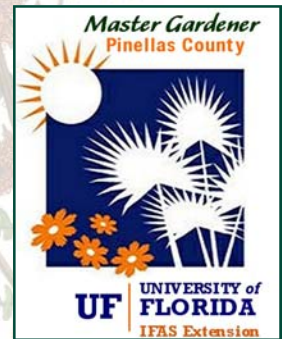
The Institute of Food and Agricultural Sciences (IFAS) is an Equal Employment Opportunity - Affirmative Action Employer authorized to provide research, educational information and other services only to individuals and institutions that function without regard to race, color, sex, age, handicap or national origin.

U.S. DEPARTMENT OF AGRICULTURE, COOPERATIVE EXTENSION SERVICE, UNIVERSITY OF FLORIDA, IFAS, FLORIDA A. & M. UNIVERSITY COOPERATIVE EXTENSION PROGRAM, AND BOARDS OF COUNTY COMMISSIONERS COOPERATING.

Good Work Volunteers!

Reminder-Mark Your Calendar!

- **MG Update Monday, February 9 at 10AM**
Orchid Care and Propagation - Michael Polen from Art Stone Orchids. He will have orchids for sale too!
- **Wednesday, February 18 at 11:30AM**
Volunteer Appreciation Pot-Luck Luncheon
- **Wednesday, March 18, 3 - 6PM**
Pam's Retirement Party



University of Florida/IFAS
Pinellas County Extension
12520 Ulmerton Rd
Largo, FL 33774

The Institute of Food and Agricultural Sciences (IFAS) is an Equal Employment Opportunity – affirmative action Employer authorized to provide research, educational information and other services only to individuals and institutions that function without regard to race, color, sex, age, handicap or national origin.

U.S. DEPARTMENT OF AGRICULTURE, COOPERATIVE EXTENSION , UNIVERSITY OF FLORIDA, IFAS, Florida A. & M. UNIVERSITY COOPERATIVE EXTENSION PROGRAM AND BOARDS OF COUNTY COMMISSIONERS COOPERATING.