



SEPTEMBER VOL. 10 ISSUE 9

# Master Gardener

PINELLAS COUNTY

## Inside this Issue:

### Page

- 2 Controlling Disease
- 3 Green Home
- 4 Revived Gardens
- 6 Chelsea Flower Show
- 7 Important Announcements
- 9 Education Announcements
- 10 Help Line Changes
- 11 Volunteer Opportunities
- 12 Foundation Update
- 13 Theresa's Thoughts

## Going Forward, Challenging and Exciting Times

Mary Campbell, Extension Director

As Extension moves into a new fiscal year, I want to underscore the incredible value of the volunteers who support us. Thanks for all you do to keep Extension rolling and to extend us into the community. As you well know, Pinellas County Extension has faced many challenges in recent months, including staff reductions in all our program areas. It is difficult to lose dedicated and professional staff who have been a part of our team for many years.

On a brighter note, we have been creating exciting new outreach programs. Of course, this makes our volunteers even more critical to our mission, especially those who are assisting with new volunteer opportunities, such as the Horticulture Help Line. Soon volunteers will take over the responsibility of answering questions on the phone line. I know our Master Gardeners are up to the task and that our citizens will benefit from their training and knowledge. We will keep the same days and hours for now, but the hope is that we will soon have enough volunteers to cover all week days in order to better serve the many residents who appreciate this service. Please contact Theresa Badurek if you are interested in this new opportunity.

We also will be launching a new Money Mentor Master Volunteers program, as well as a new Sustainable Floridians Master Volunteer Program to extend volunteer opportunities to reach more citizens with valuable information.

In addition, Extension will be providing programs and managing the day-to-day visitor experience at Brooker Creek Preserve and Weedon Island Preserve Educational Centers. These facilities are really fabulous and Extension is very proud to be asked to support the mission and vision of two unique preservation areas. You can see the programs that will be offered at the Extension On-line Registration. Both Brooker Creek and Weedon Island have many dedicated and knowledgeable volunteers that we look forward to working with.

Most of you know Extension as part of the Culture, Education and Leisure Department. This name is changing to reflect a department that includes the preservation areas and other additional responsibilities. The new department will be called **Parks and Conservation Resources** and will include Extension, Parks, Preservation Lands, Heritage Village, Air Quality and Countywide Mowing Operations.

Thank you for being a part of the team!



We are especially appreciative of staff, MGs, and others who contribute articles, events, and other items of interest to *The Green Leaf* each month. Please submit your input by the 20<sup>th</sup> of each month. This will help us assemble and publish the newsletter in a timely manner. Please limit your articles to 700-800 words or less. Limited newsletter space does not allow for full photograph viewing. If you would like a copy of any photograph presented in the newsletters, please contact me at (727) 582-2117.

Chuck Scaffidi  
MG Editor

*The Green Leaf* is published by Pinellas County Extension for the County Master Gardeners and others. The newsletter depends on submission of articles from Master Gardeners, Extension Staff and other authors.

MANAGING EDITOR:  
Chuck Scaffidi, MG

COPY EDITOR:  
Kathleen Jamison, volunteer

Please send articles to [cscaffidi@co.pinellas.fl.us](mailto:cscaffidi@co.pinellas.fl.us)  
*The Green Leaf* and archives are available on-line by clicking on [newsletter](#)

## Controlling Disease and Fungi

BY JANE MORSE, Commercial Horticulture Extension Agent

It is just like a sauna outside, wet, hot and humid. Even without any irrigation, my entire yard is like a swamp. When I step onto the landscape my white tennis shoes sink down with a squish. It is definitely time for rubber boots! All of this moisture and sunshine can turn our landscapes into a jungle, with most plants, particularly the weeds, growing at light speed.

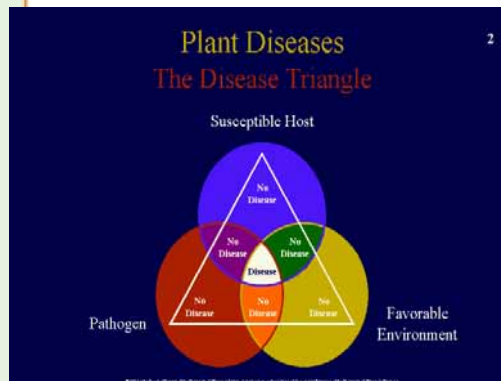


Unfortunately, wet, hot conditions also promote fungal growth.

Fungi are a large group of organisms that include yeasts, molds and mushrooms. They are important in the environment because they break down organic matter and recycle nutrients. They also can be an important source of food, like the tasty mushrooms we use for a topping on our hamburger. On the negative side, fungi can also cause plant disease.

Diseases are the exception and not the rule for lawns and landscapes. Spots and patches of yellow or brown grass can be caused by many things, such as mowing too short, fuel leaks, dog urine, drought, cold, etc. It is only when a pathogen (something that can cause disease) is involved and the environmental conditions are favorable that a disease can occur.

The disease process can be explained by using the disease triangle, at left. For disease to occur the three sides of the triangle must all be in alignment.



One side of the triangle is a susceptible host, another is the disease-causing organism, and the third, and most important, is the environment. The disease process has many steps and all of these are dependent on environmental conditions.

There are three steps to disease management. First, the disease has to be correctly identified. Second, you must determine the conditions that are

promoting disease development. Third, you must identify the management practices that will alter or eliminate the conditions promoting disease.

Much of disease control comes down to changing the environmental conditions so they are no longer favorable for the disease. We have no control over weather patterns, but we can change the way we manage our lawns and landscapes to make them less favorable for disease to occur. Watering late in the day or early evening promotes fungal growth, so it is much better to water in the early morning hours. It is also best to water as needed, rather than on a “set it and forget it” schedule. Mowing too low or too infrequently can also kill grass and cause major stress. Excessive irrigation that causes saturated soils is a harmful practice, created by people, that can cause root rots and plant stress. These stresses make plants more susceptible to diseases and other pest organisms.

If your lawn becomes infected with a disease, change the practices that are promoting the disease or other pest problem. If there is a history of a

particular disease developing at a particular time of year, prevention methods should be started in advance. Good management practices are the best place to start when trying to control diseases, weeds or insects.

Proper management practices are an often-overlooked though very important step in pest control. Our “conditioned” response is often to head directly to the chemical chest. That should be a last resort. There are mechanical, physical and biological control methods that should be used before resorting to chemicals. The worst thing to do is to throw several chemicals at a problem without really knowing the causal organism. Using the wrong product is costly, wasteful and could lead to pollution.

Pinellas County Extension, which is an “Extension” of the University of Florida, is here to help you. We have experts who can determine the problem and suggest the best ways to treat it. We can provide you with a wealth of information to help you maintain a healthy lawn and landscape.

For more information on pest management please visit the Integrated Pest Management website at <http://ipm.ifas.ufl.edu/>.

## *Look What's Coming to the Gardens!*

By MG Terri Ziegler, Green Home and Sustainability Committee Chair

Planning for the exciting new Pinellas Green Home, funded by a federal energy grant, is going full steam ahead, with participation from specialists from the County and Extension, University of Florida, industry, the Florida Botanical Gardens Foundation and others. Planning is expected to be completed early next year with construction to start late next year and anticipated completion by the mid to end of 2012. The Pinellas Green Home will be located at the west end of the Parks and Extension Building.

Two major steps, soon to be decided, are the selection of a construction manager and a Leadership in Energy and Environmental Design (LEED) accredited professional. The August Green Home planning committee meeting took place at the Sarasota green home, with a tour and information session that will be used for reference in planning the Pinellas home.

Further information about the Sarasota home can be found at [Florida Home](#). An additional site with information about another house similar to the one being planned in Pinellas is the [Utah House](#). For those FSU fans, there is also a site at [Energy and Sustainability](#) Center with energy information being considered in the planning for the Green Home.

The FBG foundation is excited to begin planning for creation of an additional Children's Trail station to be associated with the Pinellas Green Home. This new station will focus on water conservation education for children. Along with representation on the planning committee, the foundation will financially support this effort. Directed donations are always welcome.

Volunteers will be needed in the planning and implementation of both the landscape and the new children's trail station.





## *Refreshed and Revived Gardens!*

By TERRY BERUBE, MG & CHUCK SCAFFIDI, MG Editor

After the coldest winter in 20 years, the Gardens are coming back to their former beauty! Working in partnership with Pinellas County Parks, numerous volunteers and with financial support from the FBGF, cold-damaged plants have been replaced in many areas and numerous changes have been made or are planned to enhance the flora in our beautiful oasis.

Fountains that were dry for the past several years are now functioning and look magnificent. Plantings around the fountains have been upgraded and changed; if you haven't had a chance to stop by and see them, you are missing a lot. Late spring saw a transformation of the Tropical Pavilion. Additional oaks were planted, drip irrigation was installed and 190 azaleas were planted. The azaleas will bring the Gardens alive with color next spring.

At the Tropical Plaza, volunteers have been digging, transporting and replanting many beautiful bromeliads from other areas. If all goes well, the entire project will be completed by the end of summer. Numerous donated memorial trees were destroyed by the cold winter and the FBG Foundation has replaced them. Two grand La France hibiscus that flanked the east entrance of the garden were replaced and vinca was added, making an inviting entry to the Tropical Walk.

The Palm Garden lost a number of palms to the cold and they are being replaced with Pindo, Needle, Old Man, Malayan Coconut, Windmill and Paurotis palms. Six new sets of tables and chairs made of recycled materials along with vented aluminum umbrellas were purchased. Planting of the palms and installation of the furniture should be completed over the summer months.

The FBGF is also at work on a longer range plan of adding art to the Gardens to attract more visitors while reducing maintenance and conserving water; and just maybe, we can add food services. One project will cover the wedding garden fountains with a mosaic glass water pond design. We will be having a contest to name this project, so submit your entry at our Botanical Bounty Gift Shop. Another project will redesign the look into the Wedding Garden from the end of the bridge with a butterfly bench and seasonal Florida-friendly plants. The bench will be memorialized for Master Gardener Irene Costello who loved the gardens so much she bequeathed her entire estate to the Foundation.

We thank all the MGs and garden maintenance volunteers who also love the gardens and worked tirelessly in this scorching humid summer to revive them. Maintaining more than a hundred acres is a challenge for all; it can only become a reality with the partnership of volunteers and the County Parks reduced staff. We have so many exciting projects, so please consider joining us. The pictures show some of these projects in their final or conceptual phases.



# PINELLAS COUNTY 4-H FOUNDATION APPLE & PECAN SALE

It is time to get ready for our annual Apple and Pecan Sale.

- **Please submit your orders between September 1<sup>st</sup> and October 3<sup>rd</sup>, 2010.**
- Order pickup is scheduled for October 28, 29, 30 and 31st. We will keep you informed if the schedule changes.
- Please e-mail or call us to make sure that we have your correct phone number.
- Call us and we will be happy to mail you an order form or take your order on the phone.

Our web site address is [www.pc4hfoundation.org](http://www.pc4hfoundation.org)

At our web site you can:

1. Place your order on-line and securely pay with your credit card.
2. Print the order forms and mail your order with your check or money order.

## APPLES

There are two kinds of apples that are sold in **full** or **half** bushels.  
(A "Bushel" is approximately 40-42 pounds)



**EMPIRE** - This apple is a cross between a Red Delicious and McIntosh made in 1945 by the New York Agriculture Experiment Station and named and introduced in 1966. They are medium sized fruit with dark red skin with a sweet tangy flavor that resembles McIntosh though with better color, flavor and keeping ability.



**MUTSU/CRISPIN** - This apple is a cross between Golden Delicious and Indo made in 1930 in Japan and introduced in 1948. It was renamed Crispin in England, a name that still persists in the US. The large to extra-large fruit has a yellow green skin with flesh similar to Golden Delicious though, slightly coarser in texture and tarter in flavor. Excellent all-purpose apple (baking, freezing, making apple jelly/apple butter, fresh eating) that keeps well.

Apples are not graded. Both varieties will be two and a half inches or larger.

Full bushel of either kind of apples sells for **\$33.00** and half bushel of either kind sells for **\$19.00**.

## PECANS

This year's crop of Georgia pecans are available in 1 pound bags of halves or pieces priced at **\$9.00** per bag. Milk and dark chocolate covered pecan halves, cinnamon glazed halves and chocolate/pecan clusters come in 12 oz. bags and sell for **\$9.00** per bag.

Pecan Pieces	Pecan Halves	Milk Chocolate covered	Dark Chocolate covered	Cinnamon Glazed	Chocolate/Pecan Clusters
					

Pinellas County 4-H Foundation, Inc.  
13799 Park Blvd. N. #316 Seminole, FL 33776

727-521-7307

[info@pc4hfoundation.org](mailto:info@pc4hfoundation.org)  
[www.pc4hfoundation.org](http://www.pc4hfoundation.org)



# The CHELSEA FLOWER SHOW and ENGLISH GARDENS Tour

May 21 – May 28, 2011



Travel Unlimited offers you the opportunity to tour through not only the magnificent gardens of England, but also to spend the day at the 2011 Chelsea Flower Show.

On this week long trip you'll be amazed at the fantastic kaleidoscope of colors throughout gardens such as the magnificent Elizabeth Mansion, the Asian Health Garden, the Water Garden, the Loder Valley

Nature Reserve, and more! And In addition to visiting many beautiful gardens, you will be able to spend the day at the award winning Borde Hill Gardens just in time for the annual "Sculpture in the Garden" exhibition.

The tour provides dinner and breakfast opportunities as well as "Afternoon Tea" at a private estate, overlooking their extravagant gardens.

Throughout the trip you will be immersed in the beautiful sights, wonderful accommodations, and friendly and knowledgeable escorts.

This once in a lifetime opportunity manages \$2799, but with mention of having learned about the trip through the Florida Botanical Gardens when booking with Travel Unlimited, you and any friends and referrals will be granted a \$50 American Express Gift Card.



## IMPORTANT ANNOUNCEMENTS

- **An Exciting Water World for Children**
- **Series of Extension Classes**
- **Volunteer Hours & VMS**
- **MG Update**
- **Back Yard Composting**
- **Call for Speakers**
- **Planting Pinellas**

### Recording Your Volunteer Hours Please Remember to Sign Out!

The computer program for logging volunteer hours is outside the volunteer office, near the Help Desk. Make this your first stop and last stop. You must **sign in and sign out** when you are at Extension. When the computer is not functioning you can still log your time in the book. For those who volunteer at other facilities, e-mail your hours after your visit. With more than 200 volunteers at Extension, it becomes a considerable burden on the volunteer coordinators to manually enter your hours. **When not at Extension, please e-mail your hours to:** [cscaffidi@co.pinellas.fl.us](mailto:cscaffidi@co.pinellas.fl.us) Direct questions to volunteer coordinator Chuck Scaffidi or assistant Emma Eshbaugh.

## *An Exciting Water World for Children*

The Foundation is excited about the creation of an additional Children's Trail station to be associated with the new Pinellas Green Home. This new station will focus on water conservation to educate children.

MGs, form a team and help the FBGF expand the Children's Trail! Become a team project leader or member. Get involved in researching the subject, locating a suitable site, help with the construction, and design educational descriptive signage.

The FBGF will fund this project. It's also possible that grant money may be available for this children's water conservation project.

Theresa Badurek will consider this project for entry in the UF/IFAS in the Master Gardener annual state award in 2011. This means documenting the project from inception to completion. Chuck Scaffidi can provide guidance for accomplishing this.

Pat Dieterich is the Foundation chair for the Children's Trail and will provide oversight and guidance for this project. E-mail her at [pzd@tampabay.rr.com](mailto:pzd@tampabay.rr.com) or Chuck at [cascaffidi@juno.com](mailto:cascaffidi@juno.com) or contact the volunteer office 582-2117.

We are anxious to get this started.

### ■ *Series of Extension Classes*

The following classes will be offered at Extension for **free to MGs, volunteers and FBGF members** who register. When you attend you must show one of the membership cards. All others pay a nominal fee of \$15. Please see Extension's [on-line calendar page](#) for details and to register.

### ■ *Volunteer Hours*

**The new Master Gardener VMS system is on-line for your use.** This is an exciting new system that will allow you to see news updates, emails, and input your volunteer hours through an exclusive Pinellas County MG website. Each one of you will need a personal email address to access this, so if you currently share one with a spouse or other MG, please take a minute and set up a free personal account that you can use for this. We are all going to benefit from this new system and we will make sure to bring everyone up to date as we move forward with it. It's web-based, secure, and user-friendly- you can even jump on from your web-enabled cell-phone if you like. Go to <https://florida.volunteersystem.org> and click on the New User tab to get started.

For those who are unable to input their hours, we will provide a book and a volunteer to input your hours.

**Volunteers, other than MGs, will continue to use the same County VSP system and log book outside the volunteer office. Please adhere to the policy described in box at left.**

The transition may take time to get use to, but we will be working to be sure hours you have cumulated will not be lost.





- **Master Gardener Monthly Update, Wednesday, Sept. 8.** This is a **potluck** , so please plan to bring a dish to share. Our speaker will be Robert Segundo, a member of Fire of Hope, an organization located in St. Petersburg, that is dedicated to solving the world's problems with permaculture practices and edible landscapes. <http://www.fireofhope.org/>  
Andy Wilson will present information for Master Gardeners who work at the Help Desk following the lecture.



- **Sept. 11 Backyard Composting**, Extension, 9-10:30 a.m. (Presented by Dale Armstrong and Wilma Holley)
- I would like to know what kind of speakers and/or classes you are interested in for the future. Please send me suggestions as soon as possible. Thank you!
- Theresa Badurek, 582-2109 [tbadurek@co.pinellas.fl.us](mailto:tbadurek@co.pinellas.fl.us)
- New “Planting Pinellas” blog post: <http://plantingpinellas.blogspot.com/>

*30th Annual  
Florida Master Gardener Continued Training Conference  
Oct. 25-27  
Hilton Sandestin Beach, Destin, FL*



The 2010 Florida Master Gardener Continued Training Conference, to be held this year at the fabulous Sandestin Beach Golf Resort and Spa, provides a unique opportunity to get the latest information directly from the specialists. You can also see the awards program where your fellow volunteers are recognized for their service and excellent projects.

If you enjoy playing golf or tennis, swimming in the indoor and two outdoor pools or any other outside activity, this is the place for you and your family. There is plenty of high-end and outlet shopping and a wide variety of restaurants nearby. The Florida panhandle has many great places to visit and incredible sights to see. Make this trip to the meetings a vacation by including your family for some quality time before or after the conference to enjoy this unique area of Florida.

I look forward to seeing you in October!  
Learn more: <http://www.conference.ifas.ufl.edu/gardener/>

**Tom Wichman, Florida Master Gardener Coordinator**

**If you're interested in any of the  
Pre-Conference Events on  
Sunday, October 24, visit link below:**

<http://www.conference.ifas.ufl.edu/gardener/precon.htm>

**Meeting Site and Hotel  
Accommodations**

**Hilton Sandestin Beach**

4000 Sandestin Blvd.  
Destin, FL 32550  
PH: 850-267-9500  
FAX: 850-267-3076  
TOLL FREE: 800-367-1271  
[www.sandestinbeachhilton.com](http://www.sandestinbeachhilton.com)

The Hilton Sandestin is offering participants of the **30th Annual Florida Master Gardener Continued Training Conference** a very special rate of \$114 per night (plus 11.5% state and local taxes), for up to four people in a room.

The group rate will be honored three days prior and three days following the conference dates, **based on availability.**

Online hotel reservations available soon!



## IMPORTANT EDUCATION ANNOUNCEMENTS

- MG CEU Credits
- Palm Harbor Class
- St. Pete Library Class
- MG Propagation Class



Pinellas County  
12520 Umerston Rd.  
Largo, FL 33774-3602  
Phone: (727)582-2100  
Fax: (727)582-2149

The enclosed material is provided as one of the many services relating to the educational programs offered by this agency. Our statewide network of faculty is prepared to provide current information on food, agriculture, marine and natural resource science, energy, nutrition, family and 4-H youth, and related fields. We will be happy to help you with additional information upon request.

Theresa Bushark  
Extension Agent II, Urban Horticulture

The Institute of Food and Agricultural Sciences (IFAS) is an Equal Employment Opportunity - Affirmative Action Employer authorized to provide research, educational information and other services only to individuals and institutions that function without regard to race, color, sex, age, handicap or national origin.

U.S. DEPARTMENT OF AGRICULTURE, COOPERATIVE EXTENSION SERVICE, UNIVERSITY OF FLORIDA, IFAS, FLORIDA A. & M. UNIVERSITY  
COOPERATIVE EXTENSION PROGRAM, AND BOARDS OF COUNTY COMMISSIONERS COOPERATING.

### ■ *Earn Continuing Education Credits*

Master Gardeners can earn continuing education credits by completing **Plant ID Modules** at [http://gardeningsolutions.ifas.ufl.edu/mastergardener/outreach/plant\\_id/index.shtml](http://gardeningsolutions.ifas.ufl.edu/mastergardener/outreach/plant_id/index.shtml)

MGs can earn 1 CEU per module by studying the plants and earning a passing score of 80% on the "Test Yourself" feature. Once a score of 80% has been reached, MGs simply print the page and submit it to the Volunteer Office. This is an option Master Gardeners can use for a maximum of four CEUs.

### ■ *Palm Harbor Library MG Class Series*

Classes are offered on **Wednesdays from 2 to 3:30 p.m. and from 6:15 to 7:45 p.m.** at the **Palm Harbor Library, 2330 Nebraska Avenue**. To register for these classes, go to [www.pinellascountyextension.org](http://www.pinellascountyextension.org), click on the "Online Class Registration" button and then the "Lawn & Garden" tab. You may also call (727) 582-2100 to register.

**Sept. 8 Vegetable Gardening**, Palm Harbor Library, 2-3:30 p.m. and again from 6:15-7:45 p.m. (Presented by Pam Brown, UF/IFAS Extension Agent Emeritus)

### ■ *St Petersburg Community Library MG Class Series*

Classes offered free at the **West St. Petersburg Community Library, 6605 5 Ave. N.** To register, visit [www.pinellascountyextension.org](http://www.pinellascountyextension.org), click on the "Online Class Registration" button and then the "Lawn & Garden" tab. You may also call (727) 582-2100 to register.

### *Memorializing Our Longtime MG Friend*

Many of you have asked about Irene Costello's estate and how we are going to memorialize her. To date, most of the work has been in getting Irene's condo ready for sale. I want to thank the many volunteers who helped remove the belongings. Remember the 1986 Oldsmobile Irene used to drive to Extension? We were all amazed that it still ran, but it survived a trip to a used car dealer and to my surprise I was offered \$500! Yes, I took it with a smile. The Foundation is purchasing a butterfly bench for the wedding garden plaza (see photo on page 4). This is the plaque that will be attached to the bench.

-Chuck



## SAFETY NET



It is wonderful to get kids interested in gardening. Give them a packet of seeds and a little spot of their own, show them what to do and watch the magic happen.

Spending time in the landscape with children, especially young ones, requires adults to pay careful attention, though.

- Never leave a toddler or young child outdoors unattended.
- Teach your children never to eat any plant unless an adult is supervising.
- Make sure that poison ivy is not allowed to grow in your landscape.
- Do not allow children to eat soil from the garden.
- Check for plants with spiny leaves or thorns – such as cactuses, roses, yucca, hollies or pyracantha.
- Be careful with sharp tools and discuss with your children which tools are safe for them to use.
- Purchase tools specially made for children and properly sized for them to use.
- Be cautious with garden pesticides, be sure to store them in locked cabinets in their original containers.
- Always wash hands after gardening and use antiseptics on cuts or scrapes.

Source: <http://lsuagcenter.com/>

## MGs To Take On Help line Duties

BY THERESA BADUREK, EXTENSION AGENT

Due to a shortage of staff horticulturists to answer phones for the popular Horticulture Help line, we have had to change the game plan. Soon the Master Gardener volunteers at the Lawn and Garden Help Desk will be taking phone calls and helping homeowners through this media as well as working with walk-ins. One of the common responses I have gotten from Help Desk volunteers is that you don't want to come in just to answer phones, but that you would be happy to help out when you are working at the Help Desk. I know it's a big change, but there will be plenty of training with the horticulturists and I am certain you will find it fun and easy. We are developing a training/information program just for the Diagnostic Team that works at the Help Desk and at the Plant Clinic in Palm Harbor to develop skills and pass on the latest trends in Pinellas County landscapes. Andy Wilson, Bob Albanese, Jane Morse and I will make sure you have the tools you need!

I have faith that we can not only make this work, but continue to have the best Master Gardener program in the state! As we move forward, the days the Help line is open will continue to be Monday, Tuesday and Thursday. We are striving to maintain some consistency for our clientele because we know what a valuable resource the Help line is. This also provides some flexibility for those who are challenged by phone interaction whether for hearing challenges or other reasons. Please feel free to share any concerns or suggestions you have about this with me. I can be reached at 628-2109 or [tbadurek@co.pinellas.fl.us](mailto:tbadurek@co.pinellas.fl.us).

I would like to thank all of the Help Desk volunteers in advance for being such an amazing team and for helping our program keep up in such difficult economic times. We all know how critical it is to continue to show everyone the value of Extension and the Master Gardener program. Your fellow Pinellas County residents (and their yards) also thank you!

## “Watch for Gift Shop Sale in September!”

BY STACEY ZIDI, BOUNTIFUL BOTANICAL MANAGER

“Dog days,” meaning the hottest and most sweltering days of the summer, are still upon us here in Florida. The name comes from the ancient belief that “Sirius,” also called the Dog Star, was responsible for the hot weather. Protecting your skin and keeping cool are two important goals and Botanical Bounty can help. If your skin is sunburned or chapped from yard work, try our shea butter-based creams to restore and rejuvenate. They are packed with emollients, naturally UV-inhibiting and smell fabulous. Our tropical sarongs keep your skin protected on the beach, boat or patio and can transition to evening wear with a quick twist or knot.

Dog days also bring the summer veggies that can be prepared so many ways. The gift shop carries “The Best of the Best of Florida” cookbook with lots of great recipes. It's not too early to start thinking about your fall vegetable garden and compost piles now with our books.

I'll keep you posted on our September sale!

**As always, sincere thanks for your continued support—we appreciate you.**



Celebrate with us!



## VOLUNTEER OPPORTUNITIES & EVENTS

*For September - October*

- Attention Master Gardeners
- Heritage Village

### *Attention Master Gardeners*

Theresa Badurek , 582-2109 [tbadurek@co.pinellas.fl.us](mailto:tbadurek@co.pinellas.fl.us)

- **REMINDER:** I am creating a Master Gardeners Speakers Bureau. If you are currently giving presentations or programs in the community, I would appreciate an email with the title and a brief summary. If you have the ability to attach a power point that would also be nice, but not necessary. If you have any kind of scheduling limitations it would be helpful for me to know that as well.
- **I am also in need of a volunteer to be in charge of this Speakers Bureau.** This would be a great opportunity to earn some Master Gardener hours on your own time. You would basically take calls and emails requesting speakers and then contact the MGs on the list and set up the presentations. This could be done from home and/or during the evenings, which would be perfect for those who have full-time jobs during the day. Please let me know if you would be interested in this position.
- **ATTENTION: A preschool in Seminole wants to create a rain garden** in a small, wet courtyard area. They are seeking a Master Gardener to help them design and set up the garden. This would be a great way to spread the word about Florida Friendly practices while doing a fun outreach program. Please let me know if you are interested.



### *Heritage Village Collecting Items for Flea Market/Book Sale*

The 2010 Heritage Village Flea Market & Book Sale will be held in conjunction with the annual Country Jubilee on **Saturday, Oct. 23**. Items will be accepted at the office any time that Heritage Village is open between now and the sale date. Heritage Village is open Wednesday through Saturday between 10 a.m. and 4 p.m. and Sundays from 1 - 4 p.m..

Special drop-offs can be made at the Heritage Village Flea Market storage trailer located at Gate #3 from 10 to noon on the first and third Fridays of each month. An attendant will be there to help unload at that time.

Please save books, tools, dishes, silverware, sports equipment, craft items, toys, jewelry, furniture, decorative items, seasonal decorations and all types of house wares for this sale. No clothing or shoes can be accepted.

Thanks to all for their support!!

## Foundation Update

By **CHUCK SCAFFIDI, FBG FOUNDATION CHAIR**

This has been a very busy month. The budget reduction impacts were announced and to our disappointment the horticulture staff will be reduced again. For the foundation and Extension, this is a challenge to find more volunteers who will become the backbone for keeping the gardens alive and vibrant.

Volunteer teams continue to purchase and replace plants funded by the foundation. The Parks department, as a partner with the foundation, has also contributed to this effort. Theresa Badurek, extension agent, joined our Foundation as an advisor and we are discussing ways to provide Master Gardener-support to build the synergy between Extension and the Foundation.

As pointed out in this newsletter, and in our County approved work plan, we have many projects planned and funded. Adding art items in the formal gardens, a new Children's Trail station designed to educate children about water conservation, planning and implementing the landscape around the new Green Home, and many more exciting endeavors.



Holiday Lights co-chair Vivian Haicken and I made the decision to select a new lights contractor this year. We are confident we will have a significant display improvement with many more LED lights. The lights team has been working hard to plan this year's event which will be held, weather permitting, every evening from 5:30 p.m. to 9:30 p.m. beginning with a Grand Opening on Friday, Nov. 26 and continuing through Jan. 2. Something new this year will be a special Gift and Plant Sale from 10 a.m. to 4 p.m. on Dec. 12. The Dog Parade, which was a huge success last season, will be the day after Christmas. We plan to have three judges - one from Animal Services, a veterinarian from the community, and a former pet store owner. Registration will be \$10 per dog, with prizes in a variety of categories. Sign in from 2 to 2:45 with the parade beginning promptly at 3 p.m. Dog lovers should mark their calendars! There will be entertainment each evening and food and beverage vendors will be selling their wares. All last year's fabulous volunteers will be hearing from me soon. Let me know if you have friends and neighbors who'd like to be part of the fun.

**I remain optimistic that we can financially support the Florida Botanical Gardens**

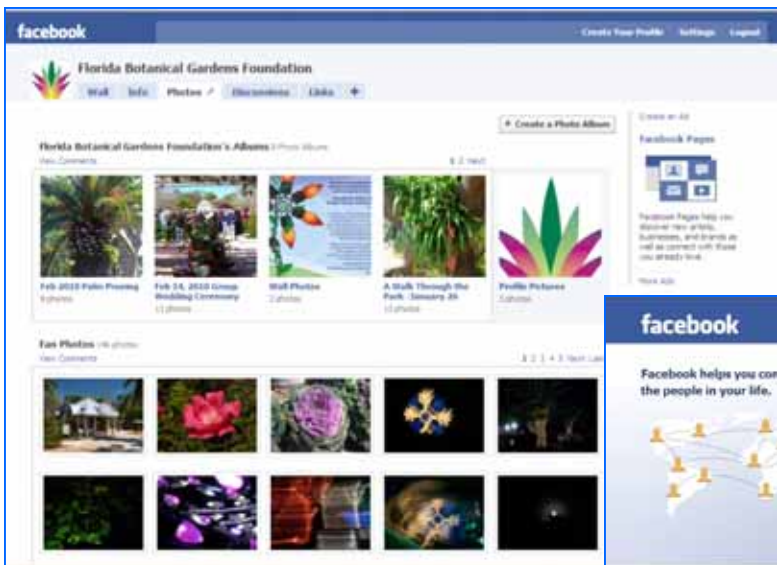
## Are You a Facebook Fan Yet?

Our fans are continuing to add beautiful photos of the gardens to our FBG Facebook page. It's wonderful to see the fan base grow. We are up to more than 250 fans and the number keeps going up.

If you haven't signed up, it's easy! Use the link below and click on the green sign up button at the top of the page.

Become a fan today so that you can view visitor photos and comments. If you have photos of the gardens you would like to share on our Facebook page, please visit the site and add your photos. You also can share your experience at the gardens on the "Wall."

Become a fan, check out all the wonderful photos and invite your friends to become fans as well! [Link to the FBG Facebook](#)





## *My Thoughts*

Hello again Master Gardeners! This is a time of such great change. I just want to take a moment to thank you all for continuing to serve your community with such excellence. The citizens of Pinellas County truly appreciate everything that you do- as do all of us here at Extension.

The next few months will continue to be challenging for us all, but I know we will take advantage of those challenges to improve what we do here at Extension. One of the major changes we are facing next is that the Diagnostic desk help line will be staffed with Master Gardeners instead of horticulturists. The horticulture faculty and staff are dedicated to training you and supporting you in this effort. It is a sad change, as we will truly miss the staff that is leaving, but we have the talent and expertise to make this a great addition to the Master Gardener repertoire.



### **It's rally time!**

Thank you!  
Theresa Badurek  
727-582-2109  
tbadurek@pinellascounty.org

## **2010** *September* *Thank You Volunteers!*

### **Looking Ahead!**

- **Wednesday, Sept. 8** Master Gardener Update and Pot Luck
- **Sept. 11 Backyard Composting**, Extension, 9-10:30AM (Presented by Dale Armstrong and Wilma Holley)
- **Saturday, Oct. 23** T Heritage Village Flea Market & Book Sale will be held in conjunction with the annual Country Jubilee.
- **Oct. 25-27** **30th Annual Florida Master Gardener Continued Training Conference**

#### **MG Plant Clinic at the Palm Harbor Library –Wednesdays from 10 a.m. to 2 p.m.**

Master Gardeners offer diagnostic services along with information about identifying plants, treatment for insects and ideas for Florida-friendly landscaping.

For details on some of the events listed go to the calendar on the Pinellas County Extension Lawn & Garden website. <http://www.pinellascounty.org/scripts/publish/webevent.pl?>